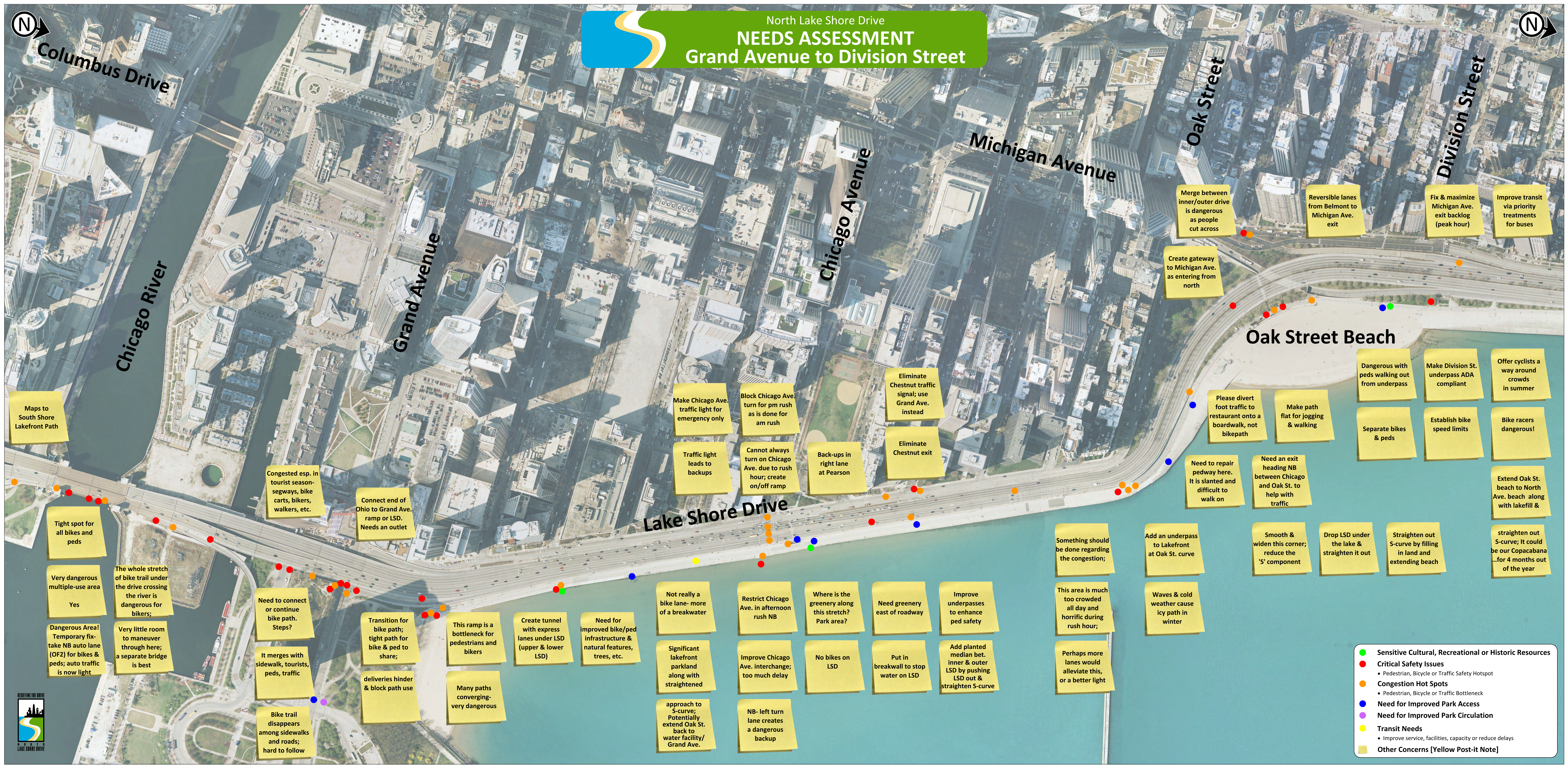




North Lake Shore Drive
NEEDS ASSESSMENT
 Grand Avenue to Division Street



Columbus Drive

Chicago River

Grand Avenue

Chicago Avenue

Michigan Avenue

Oak Street

Division Street

Lake Shore Drive

Oak Street Beach

Maps to South Shore Lakefront Path

Congested esp. in tourist season-segways, bike carts, bikers, walkers, etc.

Connect end of Ohio to Grand Ave. ramp or LSD. Needs an outlet

Tight spot for all bikes and peds

Very dangerous multiple-use area
Yes

The whole stretch of bike trail under the drive crossing the river is dangerous for bikers;

Very little room to maneuver through here; a separate bridge is best

Need to connect or continue bike path. Steps?

It merges with sidewalk, tourists, peds, traffic

Bike trail disappears among sidewalks and roads; hard to follow

Transition for bike path; tight path for bike & ped to share;

deliveries hinder & block path use

This ramp is a bottleneck for pedestrians and bikers

Many paths converging-very dangerous

Create tunnel with express lanes under LSD (upper & lower LSD)

Need for improved bike/ped infrastructure & natural features, trees, etc.

Not really a bike lane- more of a breakwater

Significant lakefront parkland along with straightened

approach to S-curve; Potentially extend Oak St. back to water facility/ Grand Ave.

Restrict Chicago Ave. in afternoon rush NB

Improve Chicago Ave. interchange; too much delay

NB- left turn lane creates a dangerous backup

Where is the greenery along this stretch? Park area?

No bikes on LSD

Put in breakwall to stop water on LSD

Need greenery east of roadway

Put in breakwall to stop water on LSD

Improve underpasses to enhance ped safety

Add planted median bet. inner & outer LSD by pushing LSD out & straighten S-curve

Make Chicago Ave. traffic light for emergency only

Traffic light leads to backups

Block Chicago Ave. turn for pm rush as is done for am rush

Cannot always turn on Chicago Ave. due to rush hour; create on/off ramp

Back-ups in right lane at Pearson

Eliminate Chestnut traffic signal; use Grand Ave. instead

Eliminate Chestnut exit

Merge between inner/outer drive is dangerous as people cut across

Create gateway to Michigan Ave. as entering from north

Reversible lanes from Belmont to Michigan Ave. exit

Fix & maximize Michigan Ave. exit backlog (peak hour)

Improve transit via priority treatments for buses

Please divert foot traffic to restaurant onto a boardwalk, not bikepath

Make path flat for jogging & walking

Dangerous with peds walking out from underpass

Separate bikes & peds

Make Division St. underpass ADA compliant

Establish bike speed limits

Offer cyclists a way around crowds in summer

Bike racers dangerous!

Need to repair pedway here. It is slanted and difficult to walk on

Need an exit heading NB between Chicago and Oak St. to help with traffic

Drop LSD under the lake & straighten it out

Straighten out S-curve by filling in land and extending beach

Extend Oak St. beach to North Ave. beach along with lakefill &

straighten out S-curve; It could be our Copacabana ..for 4 months out of the year

Something should be done regarding the congestion;

This area is much too crowded all day and horrific during rush hour;

Perhaps more lanes would alleviate this, or a better light

Add an underpass to Lakefront at Oak St. curve

Waves & cold weather cause icy path in winter

Smooth & widen this corner; reduce the 'S' component

- Sensitive Cultural, Recreational or Historic Resources
- Critical Safety Issues
 - Pedestrian, Bicycle or Traffic Safety Hotspot
- Congestion Hot Spots
 - Pedestrian, Bicycle or Traffic Bottleneck
- Need for Improved Park Access
- Need for Improved Park Circulation
- Transit Needs
 - Improve service, facilities, capacity or reduce delays
- Other Concerns [Yellow Post-it Note]

